

504 Railway Ave W
Box 3146
Nipawin, Sk. S0E 1E0



Ph: (306) 862-5551
Fax: (306) 862-5589
Email: nipoasis1@sasktel.net
www.nipawinoasis.com

Fall/Winter 2013 Volume 1, Issue 4

Welcome and Tansi :)

Huge thanks to Karen Hathaway (volunteer) and Samantha Chippeway (Youth and Family Support Program Coordinator) for compiling this newsletter and to the employees that contributed to this issue and that do their jobs with such dedication and enthusiasm. :) Makes it a fun place to work and be :)

Following the busy summer was an almost as busy Fall. Quite a few of our grants ended in the fall so with that comes final reporting and evaluation of the program. The youth are back in school so our after school programming is in full swing, along with bridging to Air Cadets and for the first time Girl Guides. Oskayak Culture Program is also continuing with weekly Powwow, jigging, Cree language and culture.

The Culture Days celebration in Sept. of Cree Language & Cree & Métis Culture was more successful then we had imagined. This was our first time in planning an event such as this and was so much fun we are already planning for next year!

We are very grateful for the Ministry of Education/Literacy Office — Literacy funding we received this past year to develop a community literacy plan. It provided the Oasis with the ability to deliver a variety of Literacy programs while contributing to some of the much needed administration and rent costs. We just received the Homelessness Initiative grant to provide funding for much needed upgrades and appliances and we are in the process of collecting applications for the upcoming Residential and Renovation Construction 12 week program that starts in March.

This next year is critical for the Oasis to find long term funding to keep the centre operating. The Oasis continues to be managed by the volunteer board of directors and the extra workload of the employees. Without this the centre would not be able to remain open. Please drop by or contact us anytime and see what we do here :) and also if you have some skills and knowledge that you would like to pass on we would welcome that :)

Tapwekichi—Joy Hanson—President—nipoasis1@sasktel.net

OASIS GREEN TEAM
Oasis

| | |
|------------------|---------------------|
| YARD WORK | HOUSE WORK |
| • Mowing | • Window Washing |
| • Raking | • Interior Cleaning |
| • Hedge Trimming | • Fence Repairs |
| • Trash Removal | • Painting |

FREE ESTIMATES — 306-862-5551
Reliable, Courteous Staff

Nipawin Taxi

Call or Text 306-862-8559

Extended hours days, evenings and weekends

Helping Build Community



INSIDE THIS ISSUE

| | |
|-------------------------------|----|
| Significant events | 2 |
| Programs | 3 |
| Culture Days | 4 |
| Garden | 5 |
| Healing Circle | 5 |
| Child Nutrition Program | 6 |
| Girl Guides | 6 |
| Youth & Family Support | 7 |
| Air Cadets | 7 |
| COPE | 8 |
| Workforce Development | 8 |
| Regina Trip | 9 |
| Powwow & Jigging | 9 |
| Employees & Board | 10 |
| Funders, Donors | 11 |
| Mission & Vision | 12 |

SIGNIFICANT EVENTS SINCE SUMMER

FASD Lunch and Learn —with Youth Program Coordinator Tara Nordmarken
Nutrition Lunch and Learn—Kathleen Hang—KTHR Public Health Nutritionist
Community Based Organizations MSS Forum—Prince Albert
Salvation Army Poverty Meetings—participating in
Northeast Intersectoral Meetings—participating in
Oasis Culture Days —Celebrating Cree Language & Cree & Métis Culture
Homelessness Initiative Grant— Application approved
Community Initiative Fund Community Grant— Application approved
Community Vitality Grant—Application approved
Northern Lights CDC—Application approved
Elders and Youth Mentorship Culture Trip—to Regina and Moose Jaw
Air Cadet—SaskCadet Camp—winter survival camp
Girl Guides—bridging 11 girls to Nipawin Girl Guides
Sask. Literacy Network Knowledge Exchange Conference —
presentation in Saskatoon on Oasis Community Literacy Plan and the Women & Girls Exploring Trades Program
Safe Talk Training— at Nipawin Hospital—8 staff /volunteers trained
Meetings and working with outside agencies—Community Wellness Co-ordinator & Early Childhood Development Facilitator, NESD Community Liasons, KTHR Primary Care Health Team, Outreach workers and supervisors.
Final Reports for grants —submitted to CIF summer, CIF annual, Inspirit Foundation, Lakeland District for Sports, Culture & Recreation, Nexen Fund, SaskPower, Service Canada—summer student, Student Summer Works, Sask-Culture—Culture Days Grant, Status of Women, Northern Lights Community Development Corporation,
Monthly Staff/Safety/Board Meetings and Policy/Procedures Learning— continued to hold the monthly meetings
Oasis Brochure—produced an Oasis brochure



Coming Events

December 8, 2:00—4:00
Oasis North East Country
Music Christmas Concert at
Evergreen Centre

December 19, 1:30—3:30
Nipawin Oasis Christmas
Party

January 13, 10:00—noon
Baby Day, facilitated by
Samantha Chippeway,
Youth and Family Support
Program Co-ordinator and
Rhonda Teichreb,
Community Wellness
Co-ordinator and Early
Childhood Development
Co-ordinator

Lunch & Learns TBA



2013—2014 OASIS PROGRAMS

TAXI TRANSPORTATION LOCALLY OWNED AND OPERATED

Taxi number is 862-8559
Taxi Driver is
James Allardice

Extended Hours days,
evenings and weekends

By supporting the
Oasis Taxi you
support the
community

Mental Health Support Program - Cope
Child Development and Nutrition Program
Youth and Family Support Program
Family Literacy Programs
Workforce Development & Employment Opportunities Program
Oskayak (Youth) Girls & Women Exploring Trades Program
Healing/Sharing Circle
Bridging Cultures Program—Inspirit Foundation
Women and Girls Beadwork Program
Cree Culture, Language and Literacy Program
Summer programs—Girl Power and Golf program
Weekly PowWow dancing and singing
Cree Language/Syllabics Course and Cradle Board making
Monthly Lunch and Learns



NIPAWIN OASIS CELEBRATES CULTURE DAYS WITH CREE LANGUAGE & CREE & METIS CULTURE

Sept. 27 & 28 (both days same programming) over 300 in attendance held at the Oasis

9-10 Pipe Ceremony (1st day) and end of 2nd day

11 – 12 Teepee Raising and Teachings with Joseph Naytowhow 2nd day Elder sharing time

12 – 1 Traditional Feast (Moose, goose, bannock, salads, turkey, sausage, soup, pies, muffins, potatoes, vegetables the works) (several local women cooked this)

12 – 1 Métis Fiddle music, jigging, dancing, old time line/round dancing with Randy Isbister, Joseph Naytowhow

1-2 Powwow dancing, Drumming, Singing, with Powwow dancers Alana Ross, dancers from Duck Lake, dancers and drummers from PA, Cumberland House

2-4 Red Earth History, Videos of Red Earth Culture Camps with Elders, Pemmican making, Moose tan hiding, with Carl Garvin, Elders Gerald Standing, Norman Head

Bonnet making, Beadwork, & Moss bags – Elders Reta Nawakayas, Ivy Nawakayas, Beatrice Head, Betsy Crane

Syllabics & Cree language – Elder Betsy Crane

Carvings and Cradle boards – Elder Henry Crane

Teepee teachings, Drumming and other teachings in the Teepee

Children's activities and games

4-5 Lunch

This was a first time for the Nipawin Oasis to host an open Cultural event for the community of this nature. This was very successful in so many ways. Sponsored by SaskCulture, Northern Lights Development Corp, and Red Earth Cree Nation.

- Bridged Communities/Changed attitudes
- Provided hope/ Utilized local resources
- Passed on knowledge, traditions and history
- Strengthened and gained partnerships
- Provided opportunities and many firsts for all



NIPAWIN OASIS COMMUNITY CENTRE CO-OPERATIVE GARDEN



In June, Brenda and John Kushniruk from Peesane volunteered to roto-til the patch of grass at the side of the Nipawin Oasis building and create a vegetable garden. They supplied the seed and plants and taught the youth and participants the correct way to plant a variety of vegetables.



The youth and participants also created flower gardens in various spots around the Oasis building. Over the long hot summer, volunteers watered and weeded the gardens.



The gardens not only added to the look of the building but also provided youth and family kitchens with some yummy fresh produce.



The participants and youth are looking forward to planting, weeding (not so much) and harvesting again next year.



HEALING/SHARING CIRCLE—DOUG WITHEROW & NOREEN MOORE

Attendance at the weekly Wednesday Healing/ Sharing Circle continues to grow as more people hear about the program. Elders from James Smith Cree Nation and the Marguerite Riel Centre attend the Healing Circle every second Wednesday. In November we had a particularly large turnout with Elders from James Smith and a local Elder as well as some people from Cumberland House and Pelican Narrows who happened to be in town and dropped by to participate in the Healing Circle as well as our regular local participants.



CHILD NUTRITION & DEVELOPMENT PROGRAM — TARA NORDMARKEN

The Youth Kitchen Program is in full swing with numbers increasing each week! We are approaching the Christmas season and are working on a song for the Christmas Concert being held December 8, 2013 at the Nipawin Evergreen Centre. This concert is proudly sponsored by the North East Country Music Association and Pineland Co-op.

We have some very exciting upcoming events that will be taking place over the next few months. One of the highlights is a trip back to the farm for some tobogganing and skinning lessons. Christmas parties are being planned for the youth during the week before Christmas. The youth are busy with powwow, learning traditional songs and dances and are enjoying it very much.

We want to take this time to wish everyone a Very Merry Christmas and a Happy New Year from the Youth Program Kitchen Staff!!!



GIRL GUIDES—TARA NORDMARKEN

This year the Nipawin Oasis Community Centre is bridging girls from Wagner School into the Nipawin Girl Guild program. We have had an excellent turnout with 9 girls enrolled.

The girls are picked up on Monday evening around 6:15 and dropped off at home around 8:30. The girls had their enrollment night which earned them a few badges! They have been super excited to be working on all the different badges in their Girl Guide Badge Book.

The girls are required to pay \$1.00 in dues every Monday to help with the cost of supplies. Once the uniforms and scarves are received the girls will be wearing their uniforms every Monday.

We had a bottle drive for the Girl Guides—this was a TOTAL success. We had the van packed with bottles and girls. Awesome job girls—keep up the good work!!!



YOUTH AND FAMILY SUPPORT PROGRAM—SAMANTHA CHIPPEWAY

This program coordinates and provides support, information and referrals to individuals and families to improve their quality of life. It aims to promote, maintain, and enhance the integrity of the family.

Current Programs Offered

Home Visiting/Parent Support

Drop-in Family Literacy

Family Kitchens and Family Support



AIR CADET WINTER SURVIVAL CAMP—JOY HANSON, LINDSAY BRITAIN

The thirteen youth who registered for Air Cadets are learning their drills and occasionally go to the gym to play team building games every Wednesday from 6:30—9:00pm.

On the weekend of November 22– 24, 2013 they attended a Winter Survival Camp. During this weekend they did activities such as skiing, fire-building, learned range skills and learned orientation skills. The cadets learned to cook bannock on a stick over an open fire. Their evenings were occupied by playing recreational activities such as pool, ping pong and board games.

The weekend concluded with a relay race.



MENTAL HEALTH SUPPORT—DOUG LOWE



The Mental Health Support Group (COPE) has had a busy summer and fall. In addition to the twice weekly meetings; the annual summer camp with the Prince Albert Group was a huge success. Everyone enjoyed their time at camp.

During the summer/autumn seasons, the COPE group had a number of cook-outs and outdoor activities at the Regional Park.

The Halloween party was a lot of fun for all attendees.

We are planning our annual Christmas Party with the Prince Albert Group.



WORKFORCE DEVELOPMENT AND EMPLOYMENT PROGRAM — DOUG WITHEROW & DOUG LOWE



The Workforce Development and Employment Program had a slower than desirable summer/autumn work season. It is getting busier with the snow that has started to fall. There are new workers joining our program on a weekly basis.

We are fortunate that the Nipawin Oasis Community Centre was able to buy a good used snowblower. This will come in very handy as the winter snows continue.

We have reliable, dependable workers who are always looking for casual day work or part-time work.



OASIS GREEN TEAM


Oasis
Community Support Program

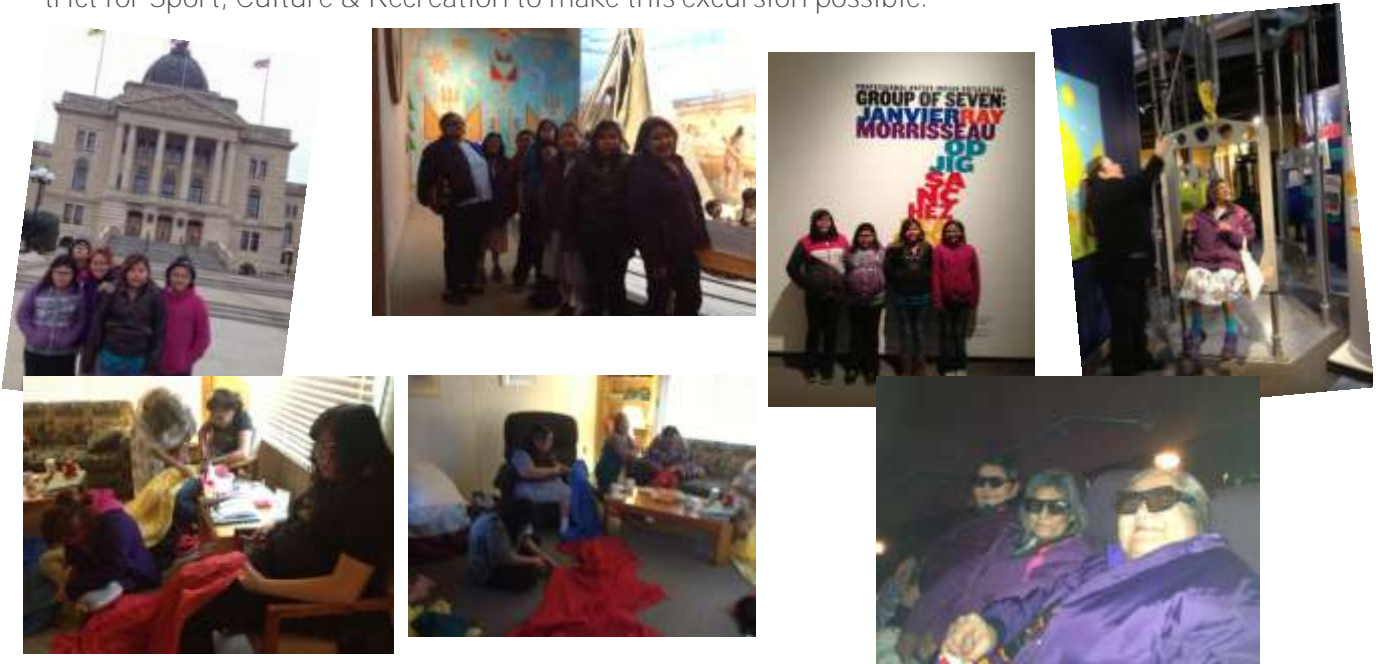
| YARD WORK | HOUSE WORK |
|------------------|---------------------|
| • Mowing | • Window Washing |
| • Raking | • Interior Cleaning |
| • Hedge Trimming | • Fence Repairs |
| • Trash Removal | • Painting |

FREE ESTIMATES — 306-862-5551

Reliable, Courteous Staff

YOUTH AND ELDERS REGINA/MOOSE JAW TRIP

What a fun November long weekend! 3 Elders from Red Earth Cree Nation, 5 girls in the Oasis Oskayak Culture Program, along with chaperones NESD FN& M consultant Sharon Meyer and Joy Hanson went to Regina and Moose Jaw to visit the Royal Saskatchewan Museum, Science Centre, IMAX Theatre, Moose Jaw Tunnels, Parliament Buildings, Mackenzie Art Gallery. The Elders also taught the girls Cree words as well as helped them with their shawls. We appreciate the funding received by Lakeland District for Sport, Culture & Recreation to make this excursion possible.



POWWOW DANCING/JIGGING —LINDSAY BRITTAIN

The children and youth in the kitchen program are learning some traditional powwow dances and jigging. They are also learning to sing a song in Cree and the basics of drumming. The children and youth are preparing shawls for an upcoming performance on December 8, 2013.

We had a guest powwow instructor here on October 21—23, 2013. Edwin Brittain explained the powwow regalia, showed videos of men and women dancing. He then gave a demonstration of powwow dancing. The children were very interested in what he had to say and the various parts of his regalia.



EMPLOYEES

Samantha Chippeway – Youth and Family Support Program Coordinator

Doug Lowe – Mental Health, Wellness and Employment Coordinator

Douglas Witherow – Workforce Development, Employment Coordinator and Métis Elder (part time)

Stacie Simon – Accounts and Records Controller (part time)

Tara Nordmarken – Kitchen and Youth Program Coordinator (part time)

Noreen Moore – support worker (part time)

Lindsay Brittain—youth worker (part time)

Belinda Dussion – Beadwork Coordinator (part time)

Harriet Lathlin—Traditional Culture Coordinator (part time)

Phyllis/ Terry Snider – Historian and Janitorial Worker (part time)

James Allardice – Nipawin Oasis Taxi Coordinator

Support Staff – Cultural Advisors, Youth workers, odd jobs, building maintenance



Board of Directors and Advisory Committee

President – Joy Hanson

Past President—Garry Schenstead

Vice President—Karen Hathaway

Treasurer— Chelsea Smits

Secretary—Diane Berge

Directors:

Myrtie Rempel

Arnold Schellenberg

Charlie McKay

Robert Whitecap

Ron Saretzky

Sharon LaFlamme—Meyer



Curent Advisory Committee:

Senator Philip Head (Red Earth and PAGC)

Ina Whitehead—Vice—Chief Red Earth

Carlton Bear—Vice Chief Shoal Lake

Jan Boughen—Kids First

Cliff Rose—Nipawin Rotary

Ron Nickel—Social Services

Terry Farden—Town of Nipawin

Lorna King—United Church



THANKYOU :) FUNDERS, PARTNERS AND DONORS 2013-2014



Marguerite Riel
Centre Melfort



Rotary Club of Nipawin

2013—2014 Funders and Donors since April 1, 2013
(in addition to above)

- United Church Women
- Knights of Columbus
- SaskPower
- Bi-Nett Plumbing & Heating
- Apostolic Church
- Aylsham Memorial Church
- Eleanor and Vernon Rourke
- Debbie Grassing
- Helen Remple
- Joyce Christianson
- Lorraine Holmen
- Doreen Revell
- Ken Hanson
- Fyrne and Lyle Hanson
- Dawn-nica and Fred Mathieson
- Adriel Larson
- Annita Stewart
- Rotary Club of Nipawin—Literacy
- Valerie Mushinski
- Town of Nipawin
- Brian and Jean Armstrong
- Frances Hughes/Gwen Peifer
- Vanity Cup
- Ukrainian Catholic Church
- Cumberland College



504 Railway Ave W
Box 3146
Nipawin, Sk. S0E 1E0



Ph: (306) 862-5551
Fax: (306) 862-5589
Email: nipoasis1@sasktel.net
www.nipawinoasis.com

Our Mission

We are a community resource co-operative centre that provides cultural, prevention, educational, and intervention programming, services, support and employment opportunities to the community of Nipawin and area in Northeast Saskatchewan.

Our Vision

Our Centre will be a place where people care, belong and get involved. Our Vision is to be one of the leaders in building an inclusive, supportive, safe and healthy community.

Caring, supportive, non-judgemental and respectful, using a

Holistic approach that promotes wellness and that provides

Opportunities and uses as its guides

Integrity which is accountability, transparency and responsible while valuing a

Community that works together and that is

Effective in meeting the needs of the community and provides

Security within a safe, respectful, and supportive environment

*Our programming focus is on **CRAFTS** which also serves as a strong foundation for the cultural, personal and leadership development of the youth, individuals and families*

C Caring and Culture

R Relationships

A Action

F Food and Fun

T Teamwork and Time

S Safety and Security



*Providing Opportunities
for
Positive Choices*

